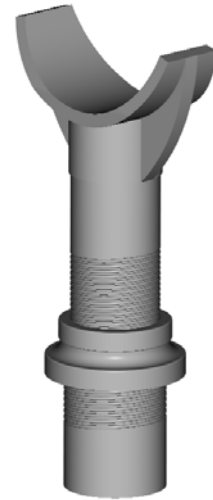
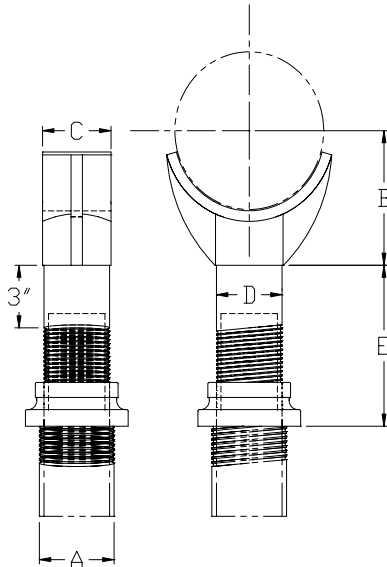


Pipe Supports
Adjustable Pipe Saddle

PART# 650



SIZE RANGE: 2 1/2" to 36" inches.

MATERIAL: Carbon Steel

FINISH: Black, Galvanized, or coated to customer specifications.

SERVICE: Stanchion type support where vertical adjustment of stationary pipe is required.

APPROVALS: Complies with Manufacturers Standardization Society SP-69 (Type 38)

INSTALLATION: Adjustment is made by turning the locknut. The lower end of the locknut is staked, upsetting the threads to prevent separation of locknut and coupling during adjustment.

ORDERING: Specify part number, name, finish and pipe size to be supported.

Load (lbs) • Weight (lbs) • Dimensions (inches)

Pipe size	Weight	A	B	C	D	E	
						Minimum	Maximum
2 1/2	9.0	2 1/2	3 1/2	3	1 1/2	8	13
3	9.2		3 3/4			8 1/4	13 1/4
3 1/2	9.4		4			8 1/2	13 1/2
4	15.0	3	4 1/4	3 5/8	2 1/2	9 1/4	14
5	16.7		4 7/8			10	14 3/4
6	17.7		5 1/2			10 1/2	15 1/4
8	20.2		6 7/8			11 3/4	16 1/2
10	25.2		8 1/2			13 1/2	18 1/4
12	29.0		9 15/16			15	19 3/4
14	40.2	4	10 15/16	4 5/8	3	16 1/4	20 3/4
16	53.2		12 3/8			17 3/4	22 1/4
18	70.8	6	13 7/8	6 3/4	3 1/2	19 1/2	24
20	104.8		15 3/8			21	25 1/2
24	137.0		17 15/16		23 3/4	28 1/4	
30	170.0		21 5/16	8 3/4	4	27	31 1/2
32	181.0		22 1/2			28 1/4	32 3/4
36	249.0	24 1/2			30 1/4	34 3/4	