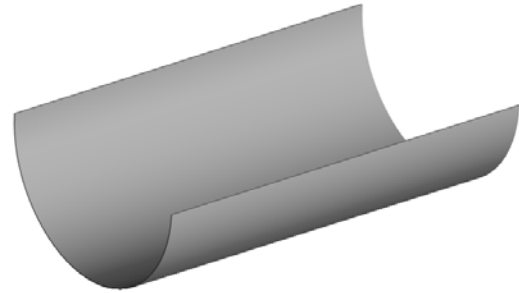
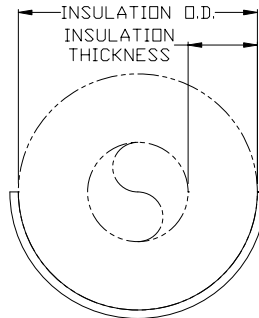
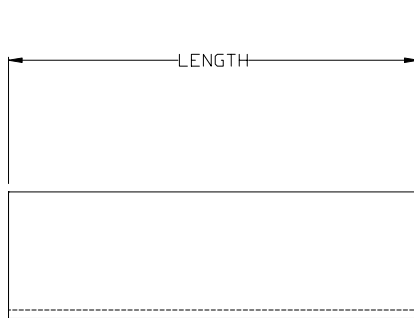


**Pipe Saddle  
Insulation Shield**

**PART# 615**



**SIZE RANGE:** 1/2" to 24" pipe with 1/2", 3/4" up to 1", 1 1/2" and 2" thick insulation.

**MATERIAL:** Carbon steel.

**FINISH:** Black, Galvanized, or Painted

**SERVICE:** Recommended for outside of foam or fiberglass insulation for distribution of loads to preclude crushing of insulation without breaking the vapor barrier. May be used with Parts number 380 and 381.

**APPROVALS:** Complies with Manufacturers Standardization Society SP-69 (Type 40)

**ORDERING:** Specify size, part name, part number, and finish. Sizes other than shown on data table available upon request.

**Load (lbs) • Weight (lbs) • Dimensions (inches)**

Pipe size	Insulation thickness					Insulation thickness					
	1/2	3/4	1	1 1/2	2	1/2	3/4	1	1 1/2	2	
	Shield size					Size of Part # 380 or Part# 381					
1/2	1A	1A	-	-	-	2	2	-	-	-	
3/4		2A	3A	4A	6A		2 1/2	3	3 1/2	5	
1	2A	3A	4A	5A	7A	2 1/2	3	3 1/2	4		
1 1/4				8A					5		
1 1/2				9A	6						
2	3A	4A	5A	7A	8A	3	3 1/2	4	6		
2 1/2	4A	5A	6A	8A	9A	3 1/2	4	5			
3	5A	6A	7A		8A	9A	4	5	6	8	
3 1/2	-	-	8A	9A			10A	-	-		6
4	-	-	-	-			-	-	-		8
5	-	-	9B	10B	11B	-	-	8	10		
6	-	-	10B	11B	12B	-	-	10			
8	-	-	12B	13C	14C	-	-	10	12	12	
10	-	-	14C	15C	16C	-	-	12	14	16	
12	-	-	16C	17C	18C	-	-	16	16	18	
14	-	-	17C	18C	19C	-	-		18		
16	-	-	19C	20C	21C	-	-	18	20	20	
18	-	-	21C	22C	23C	-	-	20	-	-	
20	-	-	23C	24C	25C	-	-	-	24	24	
24	-	-	26C	27C	28C	-	-	-	-	-	