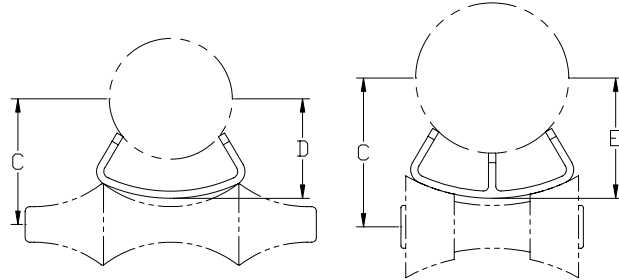
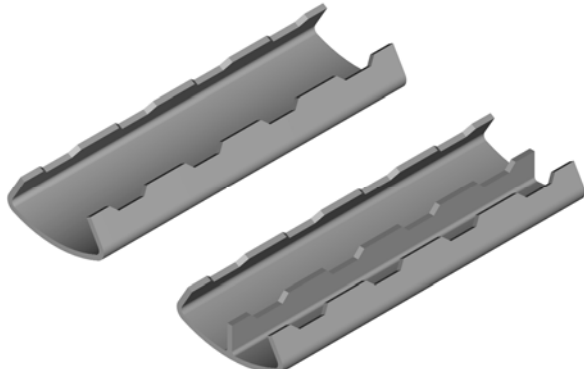


PART# 600-606A

Pipe Saddle Protection Saddle



- Part 600: 1" inch of insulation
- Part 601: 1 1/2" inches of insulation
- Part 602: 2" inches of insulation
- Part 603: 2 1/2" inches of insulation
- Part 604: 3" inches of insulation
- Part 605: 4" inches of insulation
- Part 605A: (Alloy) 4" inches of insulation
- Part 606A: (Alloy) 5 1/2" inches of insulation

SIZE RANGE: 3/4" to 36" inch pipe.

MATERIAL: Parts 600-605 are curved carbon steel plates; Part 606A and 607A are alloy steel material (A387 Grade 22) with a center plate for all pipe sizes. Parts 600-605 have a center plate for pipe sizes 12" inches and larger only. All saddles are 12" inches long.

FINISH: Black, Galvanized, or coated to customer specifications

SERVICE: For insulation protection and where heat losses are to be kept at a minimum.

APPROVALS: Complies with Manufacturers Standardization Society SP-69 (Type 39A or Type 39B)

Load (lbs) • Weight (lbs) • Dimensions (inches)

Pipe size	Part number	Max load	Weight	Size of Pipe Rolls			C	D		E
				Parts 535,540,545	Part 536	Part 500		Parts 535,540,545	Part 536	Part 500
3/4	600	1200	1.4	2	2 1/2	2-3 1/2	1 5/8	2 1/16	2 1/8	2 1/4
	601		2.1	3	3 1/2		2 3/16	2 3/4	2 3/4	2 7/8
	602		2.8	4	5		2 11/16	3 5/16	3 5/16	3 3/8
1	600	1200	1.4	2 1/2	3	2-3 1/2	1 13/16	2 5/16	2 1/4	2 7/16
	601		2.1	3	4		2 5/16	2 7/8	2 7/8	3
	602		2.8	4	5		2 7/8	3 1/2	3 1/2	3 1/2
1 1/4	600	1200	1.4	2 1/2	3	2-3 1/2	1 15/16	2 1/2	2 7/16	2 9/16
	601		2.1	3 1/2	5		2 9/16	3 1/16	3 1/16	3 3/16
	602		2.8	4	5		3	3 5/8	3 5/8	3 11/16
	603	3.6	5	6	4-6	3 3/4	4 3/8	4 3/8	4 3/8	
1 1/2	600	1200	1.5	3	3 1/2	2-3 1/2	2 1/8	2 5/8	2 5/8	2 11/16
	601		2.1	3 1/2	5		2 5/8	3 1/4	3 1/4	3 5/16
	602		3.2	5	6	4-6	3 5/16	4	4	3 7/8
	603		3.6	6	8		3 7/8	4 1/2	4 5/8	4 1/2



**Pipe Saddle
Protection Saddle**

PART# 600-606A

Weights (lbs) • Loads (lbs) • Dimensions (inches)

Pipe size	Part number	Max load	Weight	Size of Pipe Rolls			C	D		E
				Parts 535,540,545	Part 536	Part 500		Parts 535,540,545	Part 536	Part 500
2	600	1200	1.7	3 ½	4	2-3 ½	2 ¾	3	2 15/16	3 1/16
	601		2.3	4	5		2 7/8	3 ½	3 ½	3 9/16
	602		3.2	5	6	4-6	3 9/16	4 ¼	4 ¼	4 9/16
	603		3.6	6	8		4 1/16	4 ¾	4 13/16	4 ¾
	604		4.5	8			4 9/16	5 3/8	5 3/8	5 ¼
2 ½	600	1200	1.7	3 ½	5	2-3 ½	2 11/16	3 ¼	3 ¼	3 5/16
	601		2.8	5	6	4-6	3 5/16	4	4	3 15/16
	602		3.2	6	8		3 7/8	4 ½	4 5/8	4 ½
	603		4.1	8			10	4 ¼	5 1/8	5 1/8
	604		4.5		4 7/8			5 5/8	5 ¾	5 ½
3	600	1200	1.9	4	5	2-3 ½	2 15/16	3 ½	3 ½	3 9/16
	601		2.8	5	6	4-6	3 5/8	4 5/16	4 5/16	4 ¼
	602		3.6	6	8		4 1/8	4 13/16	4 13/16	4 11/16
	603		4.1	8			10	4 11/16	5 7/16	5 7/16
	604		4.9		4 9/16			6	6	6 1/16
3 ½	600	1200	2.3	5	6	4-6	3 5/16	4	4	3 15/16
	601		3.2	6	8		3 11/16	4 9/16	4 9/16	4 ½
	602		3.6	8			10	4 5/16	5 1/8	5 1/8
	603		4.5		4 11/16	5 5/8		5 5/8	5 11/16	
	604		4.9	10	5 3/8	6 5/16	6 5/16	6 3/8		
4	600	1200	2.3	5	6	4-6	3 9/16	4 ¼	4 ¼	4 3/16
	601		3.2	6	8		4 1/16	4 7/8	4 7/8	4 ¾
	602		3.6	8			10	4 9/16	5 3/8	5 3/8
	603		4.5		10	8-10		5	5 15/16	5 15/16
	604		4.9	5 5/8			6 9/16	6 9/16	6 5/8	
	605	6.1	10	12	12-14	6 ½	7 5/8	7 5/8	7 9/16	
	605A	11.6	14	16		8 1/8	9 5/8	9 ½	9 5/16	
	606A	15.7								



PART# 600-606A

Pipe Saddle Protection Saddle

Weights (lbs) • Loads (lbs) • Dimensions (inches)

Pipe size	Part number	Max load	Weight	Size of Pipe Rolls			C	D		E
				Parts 535,540,545	Part 536	Part 500		Parts 535,540,545	Part 536	Part 500
6	600	1800	3.8	8	8	4-6	4 1/2	5 3/8	5 3/8	5 1/4
	601		4.4		10	8-10	5 1/16	5 7/8	5 11/16	6
	602		5.7	10			5 1/2	6 7/16	6 7/16	6 1/2
	603		6.5		12	6 3/16	7 1/8	7 3/16	7 1/4	
	604		7.7	6 9/16		7 5/8	7 5/8	7 5/8		
	605		10.2	14	16	12-14	7 9/16	9	9	8 3/4
	605A		12.9				7 5/8	9 1/8		8 13/16
8	606A	7200	16.3	16	18	16-20	9 1/8	10 5/8	10 9/16	10 7/16
	601		5.8	10	12	8-10	6	7 1/16	7 1/16	7 1/16
	602		6.3				6 1/2	7 9/16	7 9/16	7 9/16
	603		7.2	12	14	12-14	7 1/4	8 5/16	8 1/2	8 5/16
	604		7.7	14	16		7 11/16	9	9	8 3/4
	605		10.2	16	18	16-20	8 11/16	10 1/8	10 1/8	9 7/8
	605A		16.9					10 1/16		
606A	22.6	18	20	10 1/4	11 7/8	11 13/16	11 5/8			
10	601	1800	5.8	12	14	8-10	7 1/4	8 5/16	8 1/2	8 5/16
	602		7.7	14	16	12-14	7 5/8	9 1/16	9	8 13/16
	603		8.2				8 1/8	9 9/16	9 9/16	9 5/16
	604		8.8	16	18	16-20	8 11/16	10 1/8	10 1/16	10
	605		10.8	18	20		9 3/4	11 1/4	11 1/4	11 1/8
	605A		18.9			9 11/16	11 5/16			
	606A		24.3	20	-	22-24	11 1/8	12 15/16	-	12 1/2
12	601	5000	7.8	14	16	12-14	8 1/16	9 1/2	9 1/2	9 1/4
	602		9.9	16	18	16-20	8 5/8	10 3/16	10 1/16	10
	603		10.5				9 1/8	10 11/16	10 9/16	10 1/2
	604		11.4	18	20	9 5/8	11 1/8	11 1/8	11	
	605		14.0	20	-	16-20	10 13/16	12 3/8	-	12 3/16
	605A		28.0				11	12 1/2	-	12 3/8
	606A		11140	35.5	24	-	22-24	12 5/16	14 1/4	-



**Pipe Saddle
Protection Saddle**

PART# 600-606A

Weights (lbs) • Loads (lbs) • Dimensions (inches)

Pipe size	Part number	Max load	Weight	Size of Pipe Rolls			C	D		E
				Parts 535,540,545	Part 536	Part 500		Parts 535,540,545	Part 536	Part 500
14	601	5000	7.8	16	18	12-14	8 ³ / ₄	10 ³ / ₁₆	10 ¹ / ₈	10 ¹ / ₁₆
	602		9.9				9 ⁵ / ₁₆	10 ⁷ / ₈	10 ¹³ / ₁₆	10 ¹¹ / ₁₆
	603		10.5	18	20	16-20	9 ⁷ / ₈	11 ⁵ / ₁₆	11 ³ / ₈	11 ³ / ₁₆
	604		11.4				10 ⁵ / ₁₆	11 ³ / ₄	11 ³ / ₄	11 ⁵ / ₈
	605	14.0	20	-	22-24	11 ⁵ / ₁₆	12 ⁷ / ₈	-	12 ⁵ / ₈	
	605A	27.6		-		11 ⁹ / ₁₆	13 ¹ / ₁₆	-	12 ⁷ / ₈	
	606A	35.5		24		-	12 ⁷ / ₈	14 ³ / ₄	-	14 ¹ / ₄
16	601	5000	8.4	18	20	16-20	9 ¹³ / ₁₆	11 ¹ / ₄	11 ¹ / ₄	11 ¹ / ₈
	602		10.4				10 ³ / ₁₆	11 ³ / ₁₆	11 ³ / ₄	11 ⁹ / ₁₆
	603	7200	11.1	24	-	22-24	10 ¹³ / ₁₆	12 ⁵ / ₁₆	-	12 ³ / ₁₆
	604		13.3				11 ¹ / ₁₆	12 ⁷ / ₈	-	12 ⁷ / ₁₆
	605		15.3				12 ³ / ₁₆	14 ¹ / ₈	-	13 ⁵ / ₈
	605A	30.1	11140	-	26-30	12 ⁷ / ₁₆	14 ⁵ / ₁₆	-	13 ⁷ / ₈	
	606A	40.0		30		-	13 ¹³ / ₁₆	16 ⁵ / ₈	-	15 ⁵ / ₈
18	601	5000	9.1	20	-	16-20	10 ¹³ / ₁₆	12 ⁵ / ₁₆	-	12 ³ / ₁₆
	602		10.4				11 ⁵ / ₁₆	12 ⁷ / ₈	-	12 ¹¹ / ₁₆
	603	7200	12.4	24	-	22-24	11 ⁵ / ₈	13 ⁹ / ₁₆	-	13 ¹ / ₁₆
	604		13.3				12 ¹ / ₄	14 ³ / ₁₆	-	13 ⁵ / ₈
	605		15.3				13 ⁵ / ₁₆	15 ¹ / ₄	-	14 ³ / ₄
	605A	40.3	13370	-	26-30	13 ³ / ₄	15 ¹¹ / ₁₆	-	15 ¹ / ₈	
	606A	52.1		30		-	14 ⁷ / ₈	17 ⁵ / ₈	-	16 ⁵ / ₈
20	601	7200	10.4	24	-	22-24	11 ⁵ / ₈	13 ⁹ / ₁₆	-	13 ¹ / ₁₆
	602		11.6				12 ¹ / ₄	14 ¹ / ₈	-	13 ⁵ / ₈
	603		12.4				12 ³ / ₄	14 ¹¹ / ₁₆	-	14 ³ / ₁₆
	604		13.4				13 ⁵ / ₁₆	15 ¹ / ₄	-	14 ³ / ₄
	605	22.8	13370	-	26-30	14 ¹ / ₈	17	-	15 ⁷ / ₈	
	605A	44.8		30		-	14 ³ / ₈	17 ³ / ₁₆	-	16 ¹ / ₈
	606A	52.1		-		16 ¹ / ₈	18 ¹⁵ / ₁₆	-	17 ⁷ / ₈	



PART# 600-606A

Pipe Saddle Protection Saddle

Weights (lbs) • Loads (lbs) • Dimensions (inches)

Pipe size	Part number	Max load	Weight	Size of Pipe Rolls			C	D		E
				Parts 535,540,545	Part 536	Part 500		Parts 535,540,545	Part 536	Part 500
24	601	7200	12.3	30	-	26-30	13 1/2	16 5/16	-	15 1/4
	602		13.4		-		14	16 7/8	-	15 3/4
	603		14.3		-		14 5/8	17 1/2	-	16 7/16
	604		20.3		-		15 1/4	18 1/16	-	17
	605		23.1		-		16 7/16	19 1/4	-	18 3/16
	605A	13370	45.4	-	16 11/16	19 1/2	-	18 7/16		
	606A		52.1	-	18	-	-	19 3/4		
30	601	7200	13.3	-	-	36-42	16 15/16	-	-	18 7/8
	602		14.0	-	-		17 1/2	-	-	19 3/8
	603		20.0	-	-		18 1/16	-	-	19 15/16
	604		21.4	-	-		18 5/8	-	-	20 1/2
	605		24.0	-	-		19 11/16	-	-	21 1/2
	605A	13370	47.9	-	-	19 5/8	-	-	21 3/4	
	606A		55.6	-	-	21 1/2	-	-	23 3/8	
36	601	7200	18.0	-	-	36-42	20 1/4	-	-	22 1/8
	602		18.9	-	-		20 15/16	-	-	22 5/8
	603		20.2	-	-		2 15/16	-	-	23 3/16
	604		21.6	-	-		21 7/8	-	-	23 11/16
	605		24.1	-	-		22 7/8	-	-	24 11/16
	605A	13370	48.3	-	-	23 1/8	-	-	25	
	606A		55.8	-	-	24 5/8	-	-	26 1/2	