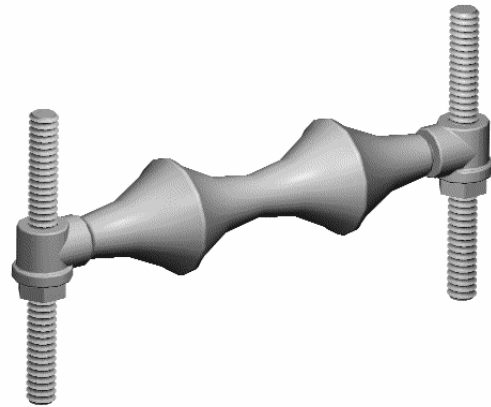
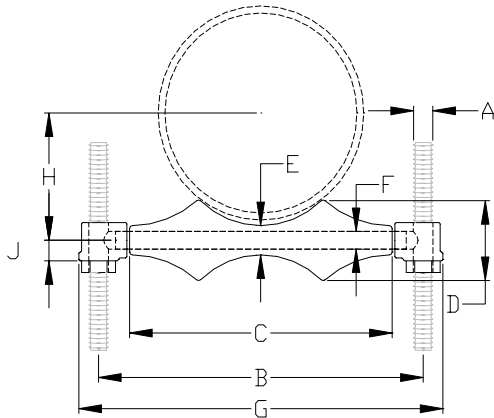


**Pipe Roll
Single Pipe Roll Support**

PART# 545



SIZE RANGE: 1" to 30" inch pipe.

MATERIAL: Cast iron roll and sockets, carbon steel roll rod, continuous thread rods and hex nuts.

FINISH: Black, Galvanized, or coated to customer specification.

SERVICE: For suspension of pipe where longitudinal movement due to expansion and contraction may occur.

APPROVALS: Complies with federal specification A-A-1192A (Type 41), WW-H-171-E (Type 42) and MSS-SP-69 (Type 41).

HOW TO SIZE: If roll is to support bare pipe, select the size directly from nominal pipe size. If used with a pipe covering select O.D. of protection saddle.

ORDERING: Specify size of roll, part number, name, and finish. Be sure to order oversized rolls when insulation and protection saddle are needed. *Hanger rod and nuts to be ordered separately.*

Load (lbs) • Weight (lbs) • Dimensions (inches)

Pipe size	Weight	Maximum Load	Rod size A	B	C	D	E	F	G	J	H
1	.45	600	3/8	3	1 1/2	1	3/4	3/8	4 1/8	9/16	1 1/16
1 1/4	.48			3 3/8	1 7/8	1 1/16			4 1/2		1 1/4
1 1/2	.51			3 5/8	2 1/8	1 1/8			4 3/4		1 3/8
2	.57			4 1/8	2 5/8	1 3/16			5 1/4		1 5/8
2 1/2	1.0	660	1/2	4 7/8	3 1/8	1 3/8	7/8	1/2	6 1/4	11/16	1 15/16
3	1.1	700		5 1/2	3 3/4	1 7/16			6 7/8		2 1/4
3 1/2	1.4	750		6 1/8	4 1/4	1 5/8			7 1/2		2 9/16
4	1.7		5/8	6 3/4	4 3/4	1 3/4	8 1/4	3/4	2 13/16		
5	2.6		3/4	8 1/16	5 13/16	2	1 1/8	5/8	9 11/16	7/8	3 7/16
6	4.5		1070	11 15/16	8 7/8	2 13/16	1 1/2	3/4	11 7/16	1	4
8	7.2	1350	7/8	14 1/16	11	3 3/8	1 3/4	7/8	14 1/16	1 1/8	5 1/8
10	9.5	1730		15 13/16	12 1/2	3 7/8	2	1	16 3/16		6 3/8
12	15.9	2400		17 3/4	14 1/4	4 5/8	2 1/2	1 1/8	20 1/8		1 3/8
14	24.3	3130	1	19 3/4	16 1/4	5	2 5/8	1 1/4	22 1/8	1 1/2	9 7/16
16	31.9	3970		21 7/8	18 1/4	5 7/16	2 3/4		24 1/2		10 1/2
18	35.5	4200		24 1/4	20 1/4	6	3		27 1/4		1 5/8
20	47.0	4550	1 1/4	28 5/8	24 1/4	7 3/16	3 5/8	1 1/2	32 1/8	1 3/4	14
24	76.3	6160	1 1/2	35 1/2	30 1/4	8 15/16	4 1/2	1 3/4	39	2 7/16	17 7/16
30	129.9	7290									