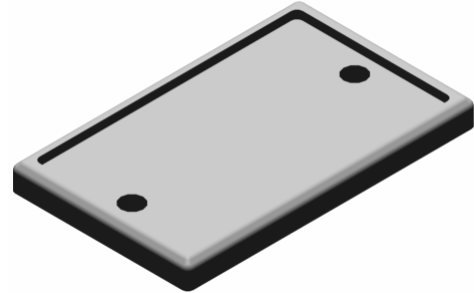
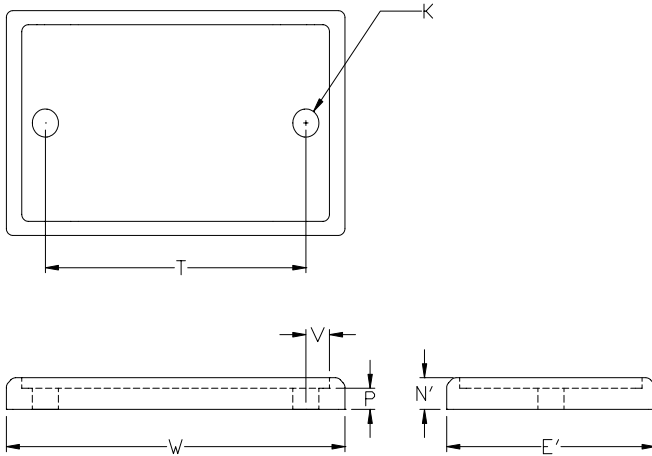


**Pipe Roll
Base plate**

PART# 510



SIZE RANGE: 2" to 42" inch pipe.
MATERIAL: Cast iron plate.
FINISH: Black, Galvanized, or coated to customer specifications.
SERVICE: (When used with Part #500) For support of pipe lines where longitudinal movement resulting from expansion and contraction may take place and where vertical and lateral adjustment during installation is necessary.
APPROVALS: Complies with Manufacturers Standardization Society SP-69 (Type 46)
ORDERING: Specify pipe roll size in order to receive the correct plate size.

Load (lbs) • Weight (lbs) • Dimensions (inches)

Pipe size	Maximum load	Weight	E'	K	N'	P	T	V	W	
2	390	15.3	5 ½	1	1	¾	3 7/16	1	6 7/8	
2 ½							4 11/16			
3							7			
3 ½							9 1/16			
4	950	19.3	5 ¾		1 1/8	¾	9 1/16	1 3/16	14 5/8	
6										10 5/8
8										11 3/8
10										14 1/4
12	3075	51.2	8		1 ¼	7/8	10 1/4	1 3/16	15 ¾	
14										19 ¼
16				21 1/4						
18				23 1/4						
20	4980	71.3	8 5/8	1 5/8	1	11 3/8	1 3/16	19 ¼		
24									25 1/4	
30									28 1/4	
36									31 1/4	
42	12000	304	11	1 ½	2	1 ½	17	2 ¼	23	