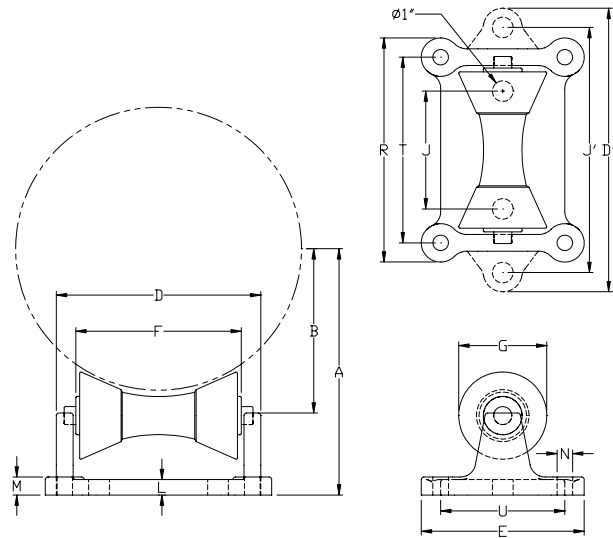
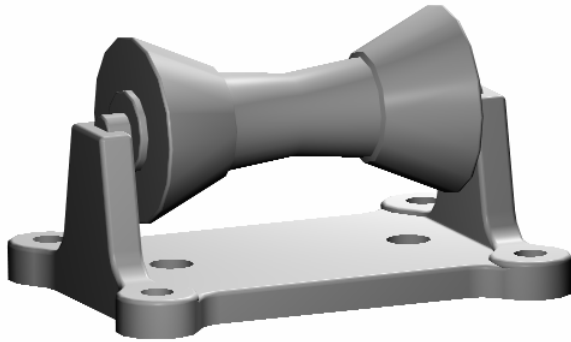


PART# 500

Pipe Roll Pipe Stand



SIZE RANGE: 2" to 42" inch pipe.
MATERIAL: Cast iron roll and stand.
FINISH: Black, Galvanized, or coated to customer specs.
SERVICE: For support of pipe where longitudinal movement resulting from expansion and contraction may take place but vertical adjustment is unnecessary.
HOW TO SIZE: If roll is to support bare pipe, select the size directly from nominal pipe size. If used with a pipe covering select O.D. of protection saddle.
APPROVALS: Complies with Manufacturers Standardization Society SP-69 (Type 44)
ORDERING: Specify pipe roll size, part number, name, and finish. Be certain to order oversized rolls where insulation makes this necessary. Pipe Rolls available without stand (part# 502) and Axle (part# 501).

Load (lbs) • Weight (lbs) • Dimensions (inches)

Pipe size	2-3 1/2	4-6	8-10	12-14	16-20	24	30	36-42
Maximum load	390	950	2100	3075	4980	6100	7500	12000
Weight	6.4	8.9	15.3	28.1	39.7	49.6	99.3	152

Pipe size	A	B	D	D'	E	F	G	J	J'	L	M	N	R	T	U
2	3 1/2	1 3/4													
2 1/2	3 7/8	2 1/8	4	8 3/8	5 3/8	2 3/4	1 7/8		6 3/8	9/16	11/16	1/2		3 7/16	4
3	4 1/8	2 3/8													
3 1/2	4 3/8	2 5/8													
4	4 13/16	2 3/4	5 3/8	9 7/8	5 5/8	3 3/4	2 1/16		7 7/8	3/4	7/8	1/2		4 11/16	4 1/4
5	5 7/16	3 3/8													
6	6 1/16	4													
8	8 11/16	5 1/4	7 3/4		6 5/8	6	3 1/4	4		3/4	7/8	5/8	8 5/8	7	5
10	9 13/16	6 3/8													
12	11 3/8	7 1/2													
14	12	8 1/8	9 7/8		7 7/8	8	4	5 3/4		3/4	7/8	3/4	10 15/16	9 1/16	6
16	13 5/8	9 3/8													
18	14 5/8	10 3/8													
20	15 5/8	11 3/8	11 1/4		8 5/8	9	4 1/2	6 3/4		7/8	1	13/16	12 3/8	10 1/4	6 1/2
24	17 3/4	13 3/8													
30	21 7/8	16 3/4													
36	25 3/4	20	18 3/4		8 5/8	10	4 7/16	7 1/2		1	1 1/8	13/16	13 1/2	11 3/8	
42	28 7/8	20 1/8													
					10 3/4	12 1/2	5 1/2	10		1 1/4	1 1/2	1 1/16	17	14 1/4	8
					12	15	6 3/8	12		1 1/2	1 3/4	1 5/16	20	17	9