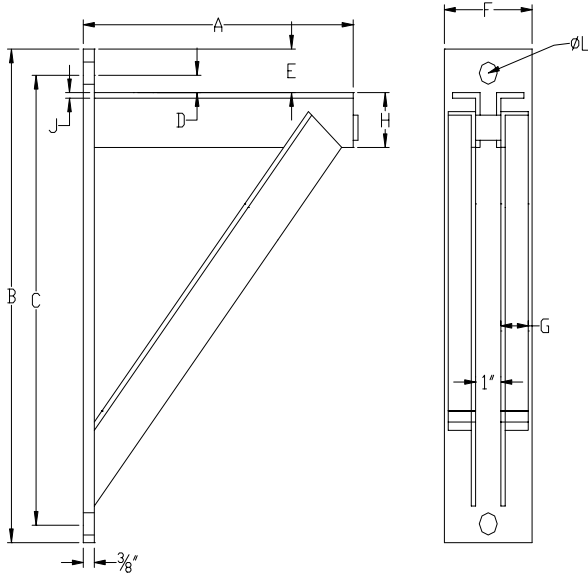


## Medium Welded Steel Bracket

## PART# 410



**MAXIMUM LOAD:** 1,500 lbs.

**MATERIAL:** Carbon Steel.

**FINISH:** Black, Galvanized, or coated to customer specifications.

**SERVICE:** Recommended for the support of loads up to 1,500 lbs.

**APPROVALS:** Complies with Manufacturers Standardization Society SP-69 (Type 32)

**HOW TO SIZE:** Determine size by dimensions most suitable to the installation (see dimensions of standard brackets below). Special welded steel brackets can be furnished to order.

**ORDERING:** Specify bracket number, part number, name, and finish. Order separately: bolts, nuts, and back plates for fastening brackets to wall. Specify size and length of bolts; size, thickness and drilling of plates. Orders for special brackets are to be accompanied by a detailed sketch.

### Load (lbs) • Weight (lbs) • Dimensions (inches)

Bracket No.	Weight	Maximum Load	A	B	C	D	E	F	G	H	J	L
0	17.4	1500	12	18	15 1/2	1 1/4	2 1/2	4	1 1/2	1 1/2	1/4	13/16
1	27.3	1500	18	24	21 1/2	1 1/4	2 1/2	5	1 3/4	1 3/4	3/16	13/16
2	47.7	1500	24	30	27 1/2	1 1/4	2 1/2	5	2	2	1/4	13/16