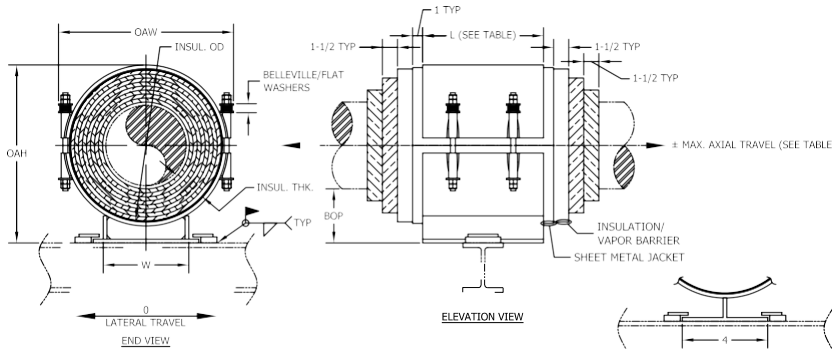


CGCW - 8 x 30 - 4 - 12 - 4335 - 1520

Model No. Nominal Pipe Size Insulation Thickness BOP (in) Support Length Vertical Load Lateral Load

DESIGNATION EXAMPLE

CryoWrap Guided Support



| L (in)* | Max. Axial Travel (in) | |
|---------|------------------------|--------|
| | Centered | Offset |
| 6 | 1.5 | 3 |
| 12 | 4.5 | 9 |

* L + 6" for pipe sizes > 42"

NOTES:

- Slide plates required for 26" NPS & up.
- All dimensions in inches unless noted.

| PIPE SIZE | VERT. LOAD (lbs) | LAT. LOAD (lbs) | INSULATION THICKNESS | | | | | | | | | | | | | | | | | | | |
|--|------------------|-----------------|----------------------|----------------|----------|----------|----------|----------------|----------|----------|----------|----------------|----------|----------|----------|----------------|----------|----------|----------|----------------|----------|----------|
| | | | 10mm | | | | 20mm | | | | 30mm | | | | 40mm | | | | 50mm | | | |
| | | | BOP (in) | INSUL. OD (in) | OAW (in) | OAH (in) | BOP (in) | INSUL. OD (in) | OAW (in) | OAH (in) | BOP (in) | INSUL. OD (in) | OAW (in) | OAH (in) | BOP (in) | INSUL. OD (in) | OAW (in) | OAH (in) | BOP (in) | INSUL. OD (in) | OAW (in) | OAH (in) |
| Do you need special loads or dimensions for this design? Please contact us at (713) 466-4777 or sales@rilco.com! | | | | | | | | | | | | | | | | | | | | | | |
| 1/2" | 300 | 105 | 4 | 1.7 | 6 | 5.5 | 4 | 2.5 | 6 | 6 | 4 | 3.3 | 6 | 6.5 | 4 | 4 | 6 | 7 | 4 | 4.8 | 6.5 | 7.5 |
| 3/4" | 385 | 135 | 4 | 1.9 | 6 | 6 | 4 | 2.7 | 6 | 6.5 | 4 | 3.5 | 6 | 6.5 | 4 | 4.2 | 6 | 7 | 4 | 5 | 7 | 7.5 |
| 1" | 510 | 180 | 4 | 2.2 | 6 | 6 | 4 | 2.9 | 6 | 6.5 | 4 | 3.7 | 6 | 7 | 4 | 4.5 | 6.5 | 7.5 | 4 | 5.3 | 7 | 7.5 |
| 1-1/2" | 740 | 260 | 4 | 2.7 | 6 | 6.5 | 4 | 3.5 | 6 | 7 | 4 | 4.3 | 6 | 7.5 | 4 | 5.1 | 7 | 8 | 4 | 5.9 | 8 | 8.5 |
| 2" | 930 | 330 | 4 | 3.2 | 6 | 7 | 4 | 4 | 6 | 7.5 | 4 | 4.8 | 6.5 | 8 | 4 | 5.6 | 7.5 | 8.5 | 4 | 6.4 | 8.5 | 9 |
| 2-1/2" | 1115 | 395 | 4 | 3.7 | 6 | 7.5 | 4 | 4.5 | 6.5 | 8 | 4 | 5.3 | 7 | 8.5 | 4 | 6.1 | 8 | 9 | 4 | 6.9 | 9 | 9.5 |
| 3" | 1360 | 480 | 4 | 4.3 | 6 | 8.5 | 4 | 5.1 | 7 | 8.5 | 4 | 5.9 | 8 | 9 | 4 | 6.7 | 8.5 | 9.5 | 4 | 7.5 | 9.5 | 10 |
| 4" | 2125 | 745 | 4 | 5.3 | 7.5 | 9.5 | 4 | 6.1 | 8 | 9.5 | 4 | 6.9 | 9 | 10 | 4 | 7.7 | 9.5 | 10.5 | 4 | 8.5 | 10.5 | 11 |
| 6" | 3230 | 1135 | 4 | 7.5 | 10 | 11.5 | 4 | 8.2 | 10.5 | 12 | 4 | 9 | 11.5 | 12.5 | 4 | 9.8 | 12 | 12.5 | 4 | 10.6 | 13 | 13 |
| 8" | 4335 | 1520 | 4 | 9.5 | 12 | 13.5 | 4 | 10.2 | 12.5 | 14 | 4 | 11 | 13.5 | 14.5 | 4 | 11.8 | 14 | 14.5 | 4 | 12.6 | 15 | 15 |
| 10" | 5100 | 1785 | 4 | 11.6 | 14 | 15.5 | 4 | 12.4 | 15 | 16 | 4 | 13.2 | 15.5 | 16.5 | 4 | 13.9 | 16.5 | 17 | 4 | 14.7 | 17 | 17 |
| 12" | 5610 | 1965 | 4 | 13.6 | 16 | 17.5 | 4 | 14.4 | 17 | 18 | 4 | 15.2 | 17.5 | 18.5 | 4 | 15.9 | 18.5 | 19 | 4 | 16.7 | 19 | 19 |
| 14" | 6375 | 2235 | 4 | 14.8 | 17 | 19 | 4 | 15.6 | 18 | 19.5 | 4 | 16.4 | 19 | 19.5 | 4 | 17.2 | 19.5 | 20 | 4 | 18 | 20.5 | 20.5 |
| 16" | 7395 | 2590 | 4 | 16.8 | 19 | 21 | 4 | 17.6 | 20 | 21.5 | 4 | 18.4 | 21 | 22 | 4 | 19.2 | 21.5 | 22 | 6 | 20 | 22.5 | 24.5 |
| 18" | 8160 | 2860 | 4 | 18.8 | 21.5 | 23 | 4 | 19.6 | 22.5 | 23.5 | 4 | 20.4 | 23.5 | 24 | 4 | 21.2 | 24 | 24 | 6 | 22 | 25 | 26.5 |
| 20" | 8670 | 3035 | 4 | 20.8 | 23.5 | 25 | 4 | 21.6 | 24.5 | 25.5 | 4 | 22.4 | 25.5 | 26 | 4 | 23.2 | 26 | 26 | 6 | 24 | 27 | 28.5 |
| 24" | 9180 | 3215 | 4 | 24.8 | 27.5 | 29 | 4 | 25.6 | 28.5 | 29.5 | 4 | 26.4 | 29.5 | 30 | 4 | 27.2 | 30 | 30.5 | 6 | 28 | 31 | 32.5 |
| 30" | 11985 | 4195 | 4 | 30.8 | 33.5 | 35 | 4 | 31.6 | 34.5 | 35.5 | 4 | 32.4 | 35.5 | 36 | 6 | 33.2 | 36 | 38.5 | 6 | 34 | 37 | 38.5 |
| 36" | 17360 | 6080 | 4 | 36.8 | 39.5 | 41 | 4 | 37.6 | 40.5 | 41.5 | 4 | 38.4 | 41.5 | 42 | 6 | 39.2 | 42 | 44.5 | 6 | 40 | 43 | 44.5 |
| 42" | 26350 | 9225 | 4 | 42.8 | 46 | 47 | 4 | 43.6 | 47 | 47.5 | 4 | 44.4 | 47.5 | 48 | 6 | 45.2 | 48.5 | 50.5 | 6 | 46 | 49 | 50.5 |
| 48" | 29410 | 10295 | 4 | 48.8 | 52 | 53 | 4 | 49.6 | 53 | 53.5 | 4 | 50.4 | 53.5 | 54 | 6 | 51.2 | 54.5 | 56.5 | 6 | 52 | 55 | 56.5 |
| 56" | 34340 | 12020 | 4 | 56.8 | 60 | 61 | 4 | 57.6 | 61 | 61.5 | 4 | 58.4 | 61.5 | 62 | 6 | 59.2 | 62.5 | 64.5 | 6 | 60 | 63 | 64.5 |
| 60" | 36805 | 12885 | 4 | 60.8 | 64 | 65 | 4 | 61.6 | 65 | 65.5 | 4 | 62.4 | 65.5 | 66 | 6 | 63.2 | 66.5 | 68.5 | 6 | 64 | 67 | 68.5 |
| 66" | 40460 | 14165 | 4 | 66.8 | 70 | 70 | 4 | 67.6 | 71 | 70.5 | 4 | 68.4 | 71.5 | 71 | 6 | 69.2 | 72.5 | 73.5 | 6 | 70 | 73 | 73.5 |
| 72" | 44200 | 15470 | 4 | 72.8 | 76 | 77 | 4 | 73.6 | 77 | 77.5 | 4 | 74.4 | 77.5 | 78 | 6 | 75.2 | 78.5 | 80.5 | 6 | 76 | 79 | 80.5 |

*W - Dimension is calculated by multiplying (INSULATION OD*0.65), when base is not a WT member.

Applications & Features:

- Temperature range to -460 Deg F to 195 Deg F
- Higher temperature applications available
- Teflon®/2B SS 304 slide plates on shoe and supporting steel on sizes 26" and larger
- Design loads based on a safety factor of 5
- A36 steel construction
- See technical specification RCS-750
- Test results available upon request
- Steel finish available in galvanized finish or painted
- Increased loading capability available. Contact Rilco for additional information
- Support constructed in accordance with ASME B31.1, B31.3 and MSS-SP58
- A307 or A193 B7 plated bolts/studs

For special applications or for information on other insulation thicknesses or pipe sizes, please contact us!

Ordering Instructions:

To Order, Please Specify:

- Model Number
- Nominal Pipe Size
- Insulation Thickness
- BOP
- Support Length
- Vertical Load
- Movements

* See last page of this document for new designation model number construction.

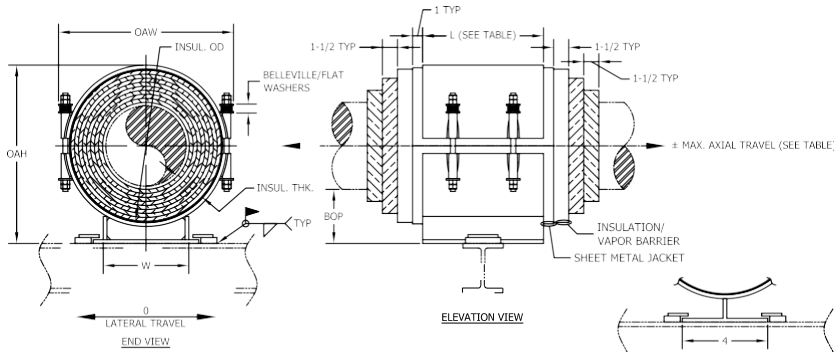
** Information presented on this page subject to change without notice.

CGCW - 8 x 30 - 4 - 12 - 4335 - 1520

DESIGNATION
EXAMPLE

**CryoWrap Guided
Support**

Model No. Nominal Pipe Size Insulation Thickness BOP (in) Support Length Vertical Load Lateral Load



NOTES:

- 1) Slide plates required for 26" NPS & up.
- 2) All dimensions in inches unless noted.

| L (in)* | Max. Axial Travel (in) | |
|---------|------------------------|--------|
| | Centered | Offset |
| 6 | 1.5 | 3 |
| 12 | 4.5 | 9 |

* L + 6" for pipe sizes > 42"

| PIPE SIZE | VERT. LOAD (lbs) | LAT. LOAD (lbs) | INSULATION THICKNESS | | | | | | | | | | | | | | | | | | | |
|---|------------------|-----------------|----------------------|----------------|----------|----------|----------|----------------|----------|----------|----------|----------------|----------|----------|----------|----------------|----------|----------|----------|----------------|----------|----------|
| | | | 60mm | | | | 70mm | | | | 80mm | | | | 90mm | | | | 100mm | | | |
| | | | BOP (in) | INSUL. OD (in) | OAW (in) | OAH (in) | BOP (in) | INSUL. OD (in) | OAW (in) | OAH (in) | BOP (in) | INSUL. OD (in) | OAW (in) | OAH (in) | BOP (in) | INSUL. OD (in) | OAW (in) | OAH (in) | BOP (in) | INSUL. OD (in) | OAW (in) | OAH (in) |
| Do you need special loads or dimensions for this design? Please contact us at (713) 466-4777 or sales@rilco.com! | | | | | | | | | | | | | | | | | | | | | | |
| 1/2" | 300 | 105 | 4 | 1.7 | 6 | 5.5 | 4 | 2.5 | 6 | 6 | 4 | 3.3 | 6 | 6.5 | 4 | 4 | 6 | 7 | 4 | 4.8 | 6.5 | 7.5 |
| 3/4" | 385 | 135 | 4 | 1.9 | 6 | 6 | 4 | 2.7 | 6 | 6.5 | 4 | 3.5 | 6 | 6.5 | 4 | 4.2 | 6 | 7 | 4 | 5 | 7 | 7.5 |
| 1" | 510 | 180 | 4 | 2.2 | 6 | 6 | 4 | 2.9 | 6 | 6.5 | 4 | 3.7 | 6 | 7 | 4 | 4.5 | 6.5 | 7.5 | 4 | 5.3 | 7 | 7.5 |
| 1-1/2" | 740 | 260 | 4 | 2.7 | 6 | 6.5 | 4 | 3.5 | 6 | 7 | 4 | 4.3 | 6 | 7.5 | 4 | 5.1 | 7 | 8 | 4 | 5.9 | 8 | 8.5 |
| 2" | 930 | 330 | 4 | 3.2 | 6 | 7 | 4 | 4 | 6 | 7.5 | 4 | 4.8 | 6.5 | 8 | 4 | 5.6 | 7.5 | 8.5 | 4 | 6.4 | 8.5 | 9 |
| 2-1/2" | 1115 | 395 | 4 | 3.7 | 6 | 7.5 | 4 | 4.5 | 6.5 | 8 | 4 | 5.3 | 7 | 8.5 | 4 | 6.1 | 8 | 9 | 4 | 6.9 | 9 | 9.5 |
| 3" | 1360 | 480 | 4 | 4.3 | 6 | 8.5 | 4 | 5.1 | 7 | 8.5 | 4 | 5.9 | 8 | 9 | 4 | 6.7 | 8.5 | 9.5 | 4 | 7.5 | 9.5 | 10 |
| 4" | 2125 | 745 | 4 | 5.3 | 7.5 | 9.5 | 4 | 6.1 | 8 | 9.5 | 4 | 6.9 | 9 | 10 | 4 | 7.7 | 9.5 | 10.5 | 4 | 8.5 | 10.5 | 11 |
| 6" | 3230 | 1135 | 4 | 7.5 | 10 | 11.5 | 4 | 8.2 | 10.5 | 12 | 4 | 9 | 11.5 | 12.5 | 4 | 9.8 | 12 | 12.5 | 4 | 10.6 | 13 | 13 |
| 8" | 4335 | 1520 | 4 | 9.5 | 12 | 13.5 | 4 | 10.2 | 12.5 | 14 | 4 | 11 | 13.5 | 14.5 | 4 | 11.8 | 14 | 14.5 | 4 | 12.6 | 15 | 15 |
| 10" | 5100 | 1785 | 4 | 11.6 | 14 | 15.5 | 4 | 12.4 | 15 | 16 | 4 | 13.2 | 15.5 | 16.5 | 4 | 13.9 | 16.5 | 17 | 4 | 14.7 | 17 | 17 |
| 12" | 5610 | 1965 | 4 | 13.6 | 16 | 17.5 | 4 | 14.4 | 17 | 18 | 4 | 15.2 | 17.5 | 18.5 | 4 | 15.9 | 18.5 | 19 | 4 | 16.7 | 19 | 19 |
| 14" | 6375 | 2235 | 4 | 14.8 | 17 | 19 | 4 | 15.6 | 18 | 19.5 | 4 | 16.4 | 19 | 19.5 | 4 | 17.2 | 19.5 | 20 | 4 | 18 | 20.5 | 20.5 |
| 16" | 7395 | 2590 | 4 | 16.8 | 19 | 21 | 4 | 17.6 | 20 | 21.5 | 4 | 18.4 | 21 | 22 | 4 | 19.2 | 21.5 | 22 | 6 | 20 | 22.5 | 24.5 |
| 18" | 8160 | 2860 | 4 | 18.8 | 21.5 | 23 | 4 | 19.6 | 22.5 | 23.5 | 4 | 20.4 | 23.5 | 24 | 4 | 21.2 | 24 | 24 | 6 | 22 | 25 | 26.5 |
| 20" | 8670 | 3035 | 4 | 20.8 | 23.5 | 25 | 4 | 21.6 | 24.5 | 25.5 | 4 | 22.4 | 25.5 | 26 | 4 | 23.2 | 26 | 26 | 6 | 24 | 27 | 28.5 |
| 24" | 9180 | 3215 | 4 | 24.8 | 27.5 | 29 | 4 | 25.6 | 28.5 | 29.5 | 4 | 26.4 | 29.5 | 30 | 4 | 27.2 | 30 | 30.5 | 6 | 28 | 31 | 32.5 |
| 30" | 11985 | 4195 | 4 | 30.8 | 33.5 | 35 | 4 | 31.6 | 34.5 | 35.5 | 4 | 32.4 | 35.5 | 36 | 6 | 33.2 | 36 | 38.5 | 6 | 34 | 37 | 38.5 |
| 36" | 17360 | 6080 | 4 | 36.8 | 39.5 | 41 | 4 | 37.6 | 40.5 | 41.5 | 4 | 38.4 | 41.5 | 42 | 6 | 39.2 | 42 | 44.5 | 6 | 40 | 43 | 44.5 |
| 42" | 26350 | 9225 | 4 | 42.8 | 46 | 47 | 4 | 43.6 | 47 | 47.5 | 4 | 44.4 | 47.5 | 48 | 6 | 45.2 | 48.5 | 50.5 | 6 | 46 | 49 | 50.5 |
| 48" | 29410 | 10295 | 4 | 48.8 | 52 | 53 | 4 | 49.6 | 53 | 53.5 | 4 | 50.4 | 53.5 | 54 | 6 | 51.2 | 54.5 | 56.5 | 6 | 52 | 55 | 56.5 |
| 56" | 34340 | 12020 | 4 | 56.8 | 60 | 61 | 4 | 57.6 | 61 | 61.5 | 4 | 58.4 | 61.5 | 62 | 6 | 59.2 | 62.5 | 64.5 | 6 | 60 | 63 | 64.5 |
| 60" | 36805 | 12885 | 4 | 60.8 | 64 | 65 | 4 | 61.6 | 65 | 65.5 | 4 | 62.4 | 65.5 | 66 | 6 | 63.2 | 66.5 | 68.5 | 6 | 64 | 67 | 68.5 |
| 66" | 40460 | 14165 | 4 | 66.8 | 70 | 70 | 4 | 67.6 | 71 | 70.5 | 4 | 68.4 | 71.5 | 71 | 6 | 69.2 | 72.5 | 73.5 | 6 | 70 | 73 | 73.5 |
| 72" | 44200 | 15470 | 4 | 72.8 | 76 | 77 | 4 | 73.6 | 77 | 77.5 | 4 | 74.4 | 77.5 | 78 | 6 | 75.2 | 78.5 | 80.5 | 6 | 76 | 79 | 80.5 |

*W - Dimension is calculated by multiplying (INSULATION OD*0.65), when base is not a WT member.

Applications & Features:

- Temperature range to -460 Deg F to 195 Deg F
- Higher temperature applications available
- Teflon@/2B SS 304 slide plates on shoe and supporting steel on sizes 26" and larger
- Design loads based on a safety factor of 5
- A36 steel construction
- See technical specification RCS-750
- Test results available upon request
- Steel finish available in galvanized finish or painted
- Increased loading capability available. Contact Rilco for additional information
- Support constructed in accordance with ASME B31.1, B31.3 and MSS-SP58
- A307 or A193 B7 plated bolts/studs

For special applications or for information on other insulation thicknesses or pipe sizes, please contact us!

Ordering Instructions:

To Order, Please Specify:

- Model Number
- Nominal Pipe Size
- Insulation Thickness
- BOP
- Support Length
- Vertical Load
- Movements

* See last page of this document for new designation model number construction.

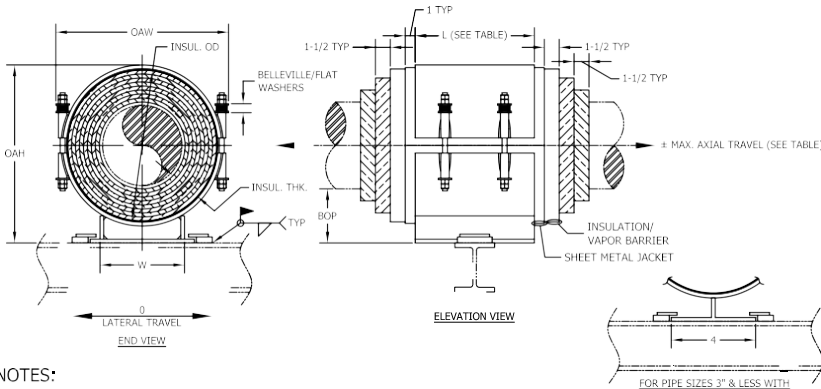
** Information presented on this page subject to change without notice.

CGCW - 8 x 30 - 4 - 12 - 4335 - 1520

DESIGNATION
EXAMPLE

CryoWrap Guided Support

Model No. Nominal Pipe Size Insulation Thickness BOP (in) Support Length Vertical Load Lateral Load



- NOTES:
1) Slide plates required for 26" NPS & up.
2) All dimensions in inches unless noted.

| L (in)* | Max. Axial Travel (in) | |
|---------|------------------------|--------|
| | Centered | Offset |
| 6 | 1.5 | 3 |
| 12 | 4.5 | 9 |

* L + 6" for pipe sizes > 42"

| PIPE SIZE | VERT. LOAD (lbs) | LAT. LOAD (lbs) | INSULATION THICKNESS | | | | | | | | | | | | | | | | | | | |
|--|------------------|-----------------|----------------------|----------------|----------|----------|----------|----------------|----------|----------|----------|----------------|----------|----------|----------|----------------|----------|----------|----------|----------------|----------|----------|
| | | | 110mm | | | | 120mm | | | | 130mm | | | | 140mm | | | | 150mm | | | |
| | | | BOP (in) | INSUL. OD (in) | OAW (in) | OAH (in) | BOP (in) | INSUL. OD (in) | OAW (in) | OAH (in) | BOP (in) | INSUL. OD (in) | OAW (in) | OAH (in) | BOP (in) | INSUL. OD (in) | OAW (in) | OAH (in) | BOP (in) | INSUL. OD (in) | OAW (in) | OAH (in) |
| Do you need special loads or dimensions for this design? Please contact us at (713) 466-4777 or sales@rilco.com! | | | | | | | | | | | | | | | | | | | | | | |
| 1/2" | 300 | 105 | 8 | 9.6 | 11.5 | 13.5 | 8 | 10.3 | 12 | 14 | 8 | 11.1 | 13 | 14.5 | 8 | 11.9 | 14 | 15 | 10 | 12.7 | 14.5 | 17 |
| 3/4" | 385 | 135 | 8 | 9.8 | 11.5 | 14 | 8 | 10.5 | 12.5 | 14 | 8 | 11.3 | 13 | 14.5 | 8 | 12.1 | 14 | 15 | 10 | 12.9 | 15 | 17.5 |
| 1" | 510 | 180 | 8 | 10 | 12 | 14 | 8 | 10.8 | 12.5 | 14.5 | 8 | 11.6 | 13.5 | 15 | 8 | 12.4 | 14.5 | 15.5 | 10 | 13.2 | 15 | 17.5 |
| 1-1/2" | 740 | 260 | 8 | 10.6 | 12.5 | 14.5 | 8 | 11.4 | 13.5 | 15 | 8 | 12.2 | 14 | 15.5 | 8 | 13 | 15 | 16 | 10 | 13.8 | 15.5 | 18.5 |
| 2" | 930 | 330 | 8 | 11.1 | 13 | 15 | 8 | 11.9 | 14 | 15.5 | 8 | 12.7 | 14.5 | 16 | 8 | 13.4 | 15.5 | 16.5 | 10 | 14.2 | 16 | 18.5 |
| 2-1/2" | 1115 | 395 | 8 | 11.6 | 13.5 | 15.5 | 8 | 12.4 | 14.5 | 16 | 8 | 13.2 | 15 | 16.5 | 8 | 13.9 | 16 | 17 | 10 | 14.7 | 16.5 | 19 |
| 3" | 1360 | 480 | 8 | 12.2 | 14 | 16.5 | 8 | 13 | 15 | 16.5 | 8 | 13.8 | 15.5 | 17 | 8 | 14.6 | 16.5 | 17.5 | 10 | 15.4 | 17.5 | 20 |
| 4" | 2125 | 745 | 8 | 13.2 | 15 | 17.5 | 8 | 14 | 16 | 17.5 | 8 | 14.8 | 16.5 | 18 | 8 | 15.6 | 17.5 | 18.5 | 10 | 16.4 | 18.5 | 21 |
| 6" | 3230 | 1135 | 8 | 15.3 | 17.5 | 19.5 | 8 | 16.1 | 18.5 | 20 | 8 | 16.9 | 19.5 | 20.5 | 8 | 17.7 | 20 | 20.5 | 10 | 18.5 | 21 | 23 |
| 8" | 4335 | 1520 | 8 | 17.3 | 19.5 | 21.5 | 8 | 18.1 | 20.5 | 22 | 8 | 18.9 | 21.5 | 22.5 | 10 | 19.7 | 22 | 24.5 | 10 | 20.5 | 23 | 25 |
| 10" | 5100 | 1785 | 8 | 19.5 | 22 | 23.5 | 8 | 20.2 | 22.5 | 24 | 8 | 21 | 23.5 | 24.5 | 10 | 21.8 | 24 | 27 | 10 | 22.6 | 25 | 27 |
| 12" | 5610 | 1965 | 8 | 21.5 | 24 | 25.5 | 8 | 22.2 | 24.5 | 26 | 8 | 23 | 25.5 | 26.5 | 10 | 23.8 | 26 | 29 | 10 | 24.6 | 27 | 29 |
| 14" | 6375 | 2235 | 8 | 22.7 | 25 | 27 | 8 | 23.5 | 26 | 27 | 8 | 24.3 | 26.5 | 27.5 | 10 | 25.1 | 27.5 | 30 | 10 | 25.9 | 28.5 | 30.5 |
| 16" | 7395 | 2590 | 8 | 24.7 | 27 | 29 | 8 | 25.5 | 28 | 29.5 | 10 | 26.3 | 28.5 | 32 | 10 | 27.1 | 29.5 | 32 | 10 | 27.9 | 30.5 | 32.5 |
| 18" | 8160 | 2860 | 8 | 26.7 | 29.5 | 31 | 8 | 27.5 | 30.5 | 31.5 | 10 | 28.3 | 31 | 34 | 10 | 29.1 | 32 | 34 | 10 | 29.9 | 33 | 34.5 |
| 20" | 8670 | 3035 | 8 | 28.7 | 31.5 | 33 | 8 | 29.5 | 32.5 | 33.5 | 10 | 30.3 | 33 | 36 | 10 | 31.1 | 34 | 36 | 10 | 31.9 | 35 | 36.5 |
| 24" | 9180 | 3215 | 8 | 32.7 | 35.5 | 37 | 8 | 33.5 | 36.5 | 37.5 | 10 | 34.3 | 37 | 40 | 10 | 35.1 | 38 | 40.5 | 10 | 35.9 | 39 | 40.5 |
| 30" | 11985 | 4195 | 8 | 38.7 | 41.5 | 43 | 10 | 39.5 | 42.5 | 45.5 | 10 | 40.3 | 43 | 46 | 10 | 41.1 | 44 | 46.5 | 10 | 41.9 | 45 | 46.5 |
| 36" | 17360 | 6080 | 8 | 44.7 | 47.5 | 49 | 10 | 45.5 | 48.5 | 51.5 | 10 | 46.3 | 49 | 52 | 10 | 47.1 | 50 | 52.5 | 10 | 47.9 | 51 | 52.5 |
| 42" | 26350 | 9225 | 8 | 50.7 | 54 | 55 | 10 | 51.5 | 54.5 | 57.5 | 10 | 52.3 | 55.5 | 58 | 10 | 53.1 | 56.5 | 58.5 | 10 | 53.9 | 57 | 58.5 |
| 48" | 29410 | 10295 | 8 | 56.7 | 60 | 61 | 10 | 57.5 | 60.5 | 63.5 | 10 | 58.3 | 61.5 | 64 | 10 | 59.1 | 62.5 | 64.5 | 10 | 59.9 | 63 | 64.5 |
| 56" | 34340 | 12020 | 8 | 64.7 | 68 | 69 | 10 | 65.5 | 68.5 | 71.5 | 10 | 66.3 | 69.5 | 72 | 10 | 67.1 | 70.5 | 72.5 | 10 | 67.9 | 71 | 72.5 |
| 60" | 36805 | 12885 | 8 | 68.7 | 72 | 73 | 10 | 69.5 | 72.5 | 75.5 | 10 | 70.3 | 73.5 | 76 | 10 | 71.1 | 74.5 | 76.5 | 10 | 71.9 | 75 | 76.5 |
| 66" | 40460 | 14165 | 8 | 74.7 | 78 | 78 | 10 | 75.5 | 78.5 | 80.5 | 10 | 76.3 | 79.5 | 81 | 10 | 77.1 | 80.5 | 81.5 | 10 | 77.9 | 81 | 81.5 |
| 72" | 44200 | 15470 | 8 | 80.7 | 84 | 85 | 10 | 81.5 | 84.5 | 87.5 | 10 | 82.3 | 85.5 | 88 | 10 | 83.1 | 86.5 | 88.5 | 10 | 83.9 | 87 | 88.5 |

*W- Dimension is calculate by multiplying (INSULATION OD*0.65), when base is not a WT member.

Applications & Features:

- Temperature range to -460 Deg F to 195 Deg F
- Higher temperature applications available
- Teflon®/2B SS 304 slide plates on shoe and supporting steel on sizes 26" and larger
- Design loads based on a safety factor of 5
- A36 steel construction
- See technical specification RCS-750
- Test results available upon request
- Steel finish available in galvanized finish or painted
- Increased loading capability available. Contact Rilco for additional information
- Support constructed in accordance with ASME B31.1, B31.3 and MSS-SP58
- A307 or A193 B7 plated bolts/studs

For special applications or for information on other insulation thicknesses or pipe sizes, please contact us!

Ordering Instructions:

To Order, Please Specify:

- Model Number
- Nominal Pipe Size
- Insulation Thickness
- BOP
- Support Length
- Vertical Load
- Movements

* See last page of this document for new designation model number construction.

** Information presented on this page subject to change without notice.