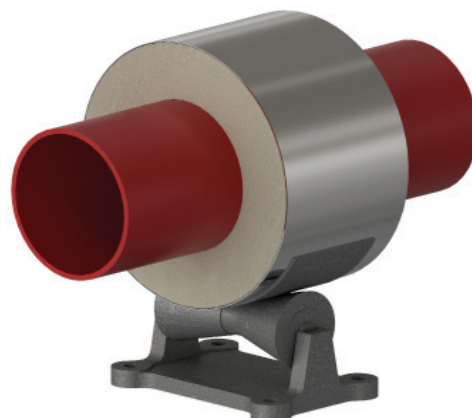
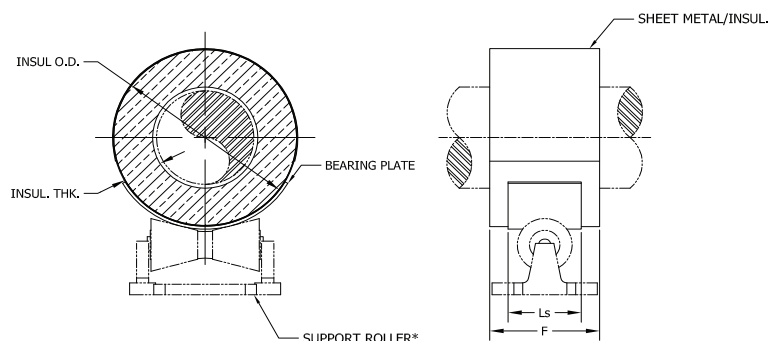


HRCS - 1 x 1.5 - 6 - 60

Model No. Nominal Pipe Size Insulation Thickness F (in) Vertical Load

NEW DESIGNATION
EXAMPLE

LEGACY DESIGNATION **HR-4000**



* - All hardware sold separately.

PIPE SIZE	VERT LOAD (lbs)	INSULATION THICKNESS																	
		1"		1-1/2"		2"		2-1/2"		3"		3-1/2"		4"		4-1/2"		5"	
		F (in)	INSUL OD (in)	F (in)	INSUL OD (in)	F (in)	INSUL OD (in)	F (in)	INSUL OD (in)	F (in)	INSUL OD (in)	F (in)	INSUL OD (in)	F (in)	INSUL OD (in)	F (in)	INSUL OD (in)	F (in)	INSUL OD (in)
1/2"	35	6	2.875	6	4	6	5	6	6.625	6	7.625	6	8.625	6	9.625	6	10.75	9	11.75
3/4"	40	6	2.875	6	4	6	5	6	6.625	6	7.625	6	8.625	6	9.625	6	10.75	9	11.75
1	60	6	3.5	6	4.5	6	5.563	6	6.625	6	7.625	6	8.625	6	9.625	6	10.75	9	11.75
1-1/2"	100	6	4	6	5	6	6.625	6	7.625	6	8.625	6	9.625	6	10.75	9	11.75	9	12.75
2	125	6	4.5	6	5.563	6	6.625	6	7.625	6	8.625	6	9.625	6	10.75	9	11.75	9	12.75
2-1/2"	150	6	5	6	6.625	6	7.625	6	8.625	9	9.625	9	10.75	9	11.75	9	12.75	9	14
3	180	6	5.563	6	6.625	6	7.625	6	8.625	9	9.625	9	10.75	9	11.75	9	12.75	9	14
4	270	6	6.625	6	7.625	6	8.625	6	9.625	9	10.75	9	11.75	9	12.75	9	14	9	15

Applications & Features:

- Light duty insulated pipe support
- For use with pipe rolls
- Temperature range to 500 Deg F
- Higher temperature applications available
- Support and insulate steam, hot water, chilled water, gas and HVAC lines
- Low installation costs
- Water-resistant calcium silicate
- Galvanized steel jacket
- Insulation extends 1" beyond jacket
- Support constructed in accordance with MSS-SP58
- For special applications or for information on other insulation thicknesses or pipe sizes, please contact us.

Ordering Instructions:

To Order, Please Specify:

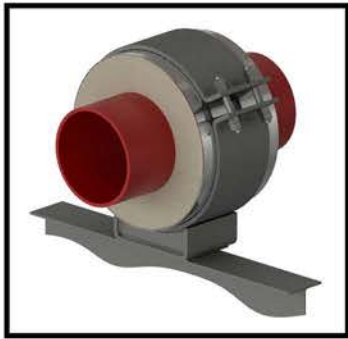
- Model Number
- Nominal Pipe Size
- Insulation Thickness
- Vertical Load
- Operating Temperature

* See last page of this document for new designation model number construction

** Information presented on this page subject to change without notice.



www.rilco.com



HSCS - 6x3-4-18-3500-1200-2000

TEMPERATURE CLASSIFICATION

HOT (H) - (typical range 0°F to 1200°F)

COLD (C) - (typical range -450°F to 200°F)

DUAL TEMP (D) - (typical range -450°F to 1200°F)

FUNCTION

SLIDE (S) (for vertically restrained pipe)
i.e. HSPW-3x1.5-4-12-2100

GUIDE (G) (for vertically and laterally restrained pipe)
i.e. HGPW-6x1.5-4-6-1275-450

- **GUIDE** (L) (for vertically and laterally restrained pipe, allows uplift of piping)
i.e. HG(L)PW-1x1.5-4-6-225-80

- **GUIDE** (M) (for vertically and laterally restrained pipe, guided at cradle)
i.e. HG(M)PW-1x1.5-4-6-225-80

ANCHOR (A) (for vertically, laterally and axially restrained pipe)
i.e. HAPW-4x1.5-4-6-840-295-1730

HANGING (H) (for vertically restrained pipe)
i.e. HHPW-3x1.5-4-12-2100

RISER (V) (for vertically restrained pipe)
i.e. HVPW-3x1.5-4-12-2100

FLAT (F) (for vertically restrained pipe)
i.e. HFPW-3x1.5-4-12-2100

ROLLER (R) (for vertically restrained pipe)
i.e. HRPW-3x1.5-4-12-2100

INSULATION TYPE

Calcium Silicate (CS)

PyroWrap (PW) (Aspen Aerogels Pyrogel® XT-E)

Polyurethane Foam (PF)

FOAMGLAS® (FG)

CryoWrap (CW) (Aspen Aerogels Cryogel® Z)

AXIAL LOAD (lbs)

LATERAL LOAD (lbs)

VERTICAL LOAD (lbs)

STEEL LENGTH (in)

BOP (in)

INSULATION THICKNESS (in)

PIPE SIZE (in)